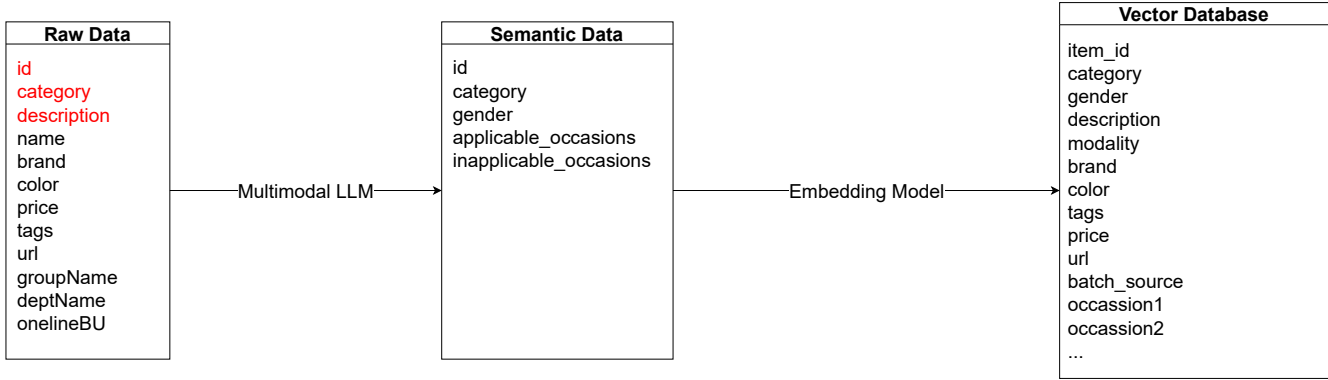


Offline Data Preparation



Comment:

- Any field marked in **red** is **mandatory**.
- The category field must be one of the following **EXACT** values:

- **Clothing**
- **Accessories**
- **Shoes**
- **Bags**
- **Fine Jewellery And Watches**

- Optional fields** can help increase the classification accuracy in the subsequent step.

Comment:

- Data Source: **category, gender, occasions** are extracted and classified from the Raw Data using the MLLM.
- Category and occasion taxonomy are shown below.

```

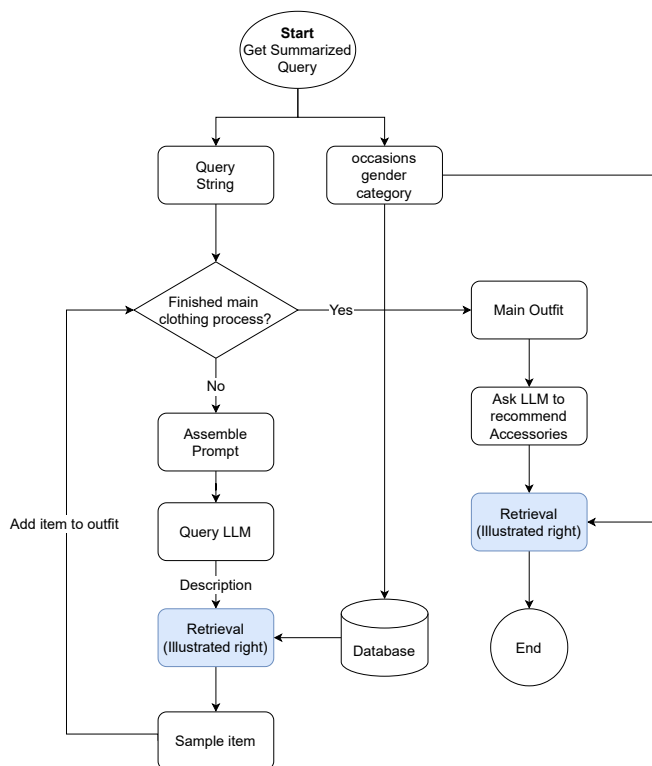
CATEGORY = {
  'clothing': [
    'coats', 'jackets', 'blazers', 'puffer', 'cardigan', 'sweater', 'shirts',
    't-shirts', 'pullover', 'polos', 'bodysuits', 'dresses', 'skirts',
    'jeans', 'shorts', 'leggings', 'jumpsuits', 'swimwear',
  ],
  'shoes': [
    'sneakers', 'formal shoes', 'heels', 'flats', 'sandals', 'slides', 'boots',
  ],
  'bags': [
    'bags'
  ],
  'accessories': [
    'necklaces', 'bracelets', 'jewellery', 'eyewear', 'scarves', 'hats',
    'gloves', 'belts', 'socks', 'watches', 'ties',
  ]
}

OCCASION = [
  "Casual", "Formal", "Activewear", "Resort", "Evening", "Outdoor",
  "Business / workwear", "Cocktail / Semi-Formal", "Black Tie / White Tie",
  "Bridal / Wedding", "Festival / Concert", "Party / Clubbing",
  "Travel / Transit", "Athleisure", "Beach / Swim", "Ski / Snow / Mountain",
  "Garden Party / Daytime Event"
]
  
```

Comment:

- Image of item will be embedded into vector database.
- category, gender and occasion** will be used for filtering.
- batch_source specifies the set of products that should be included in the retrieval.

Online Recommendation



Retrieval Workflow

